



*The Chancellor's  
Exhibition Series  
provides regional  
artists a unique  
place to show  
their artwork.*

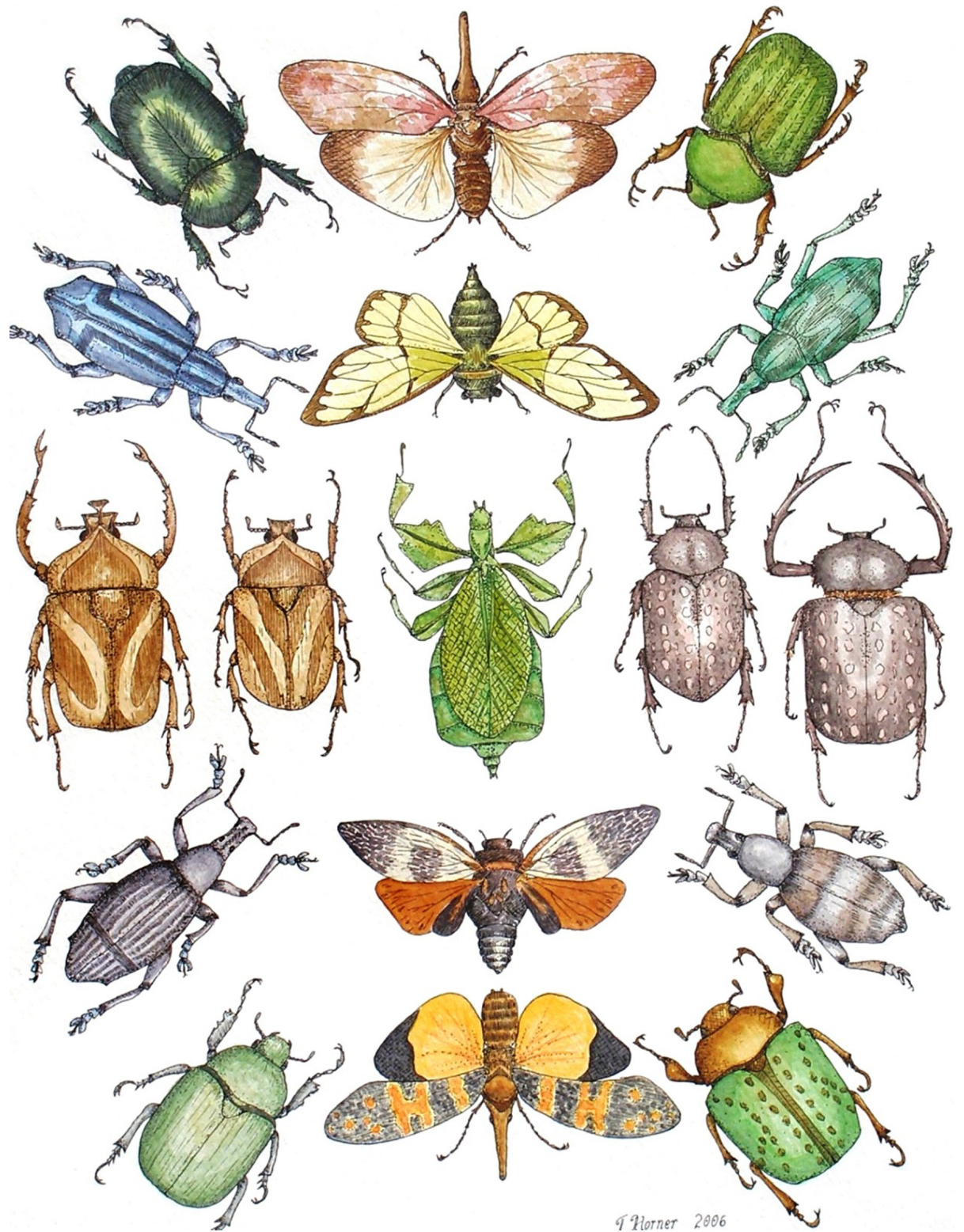
**Artists Include:**

Tracy Horner

Vali Hawkins Mitchell

Leonard Orr

Heather Willoughby



# *The Chancellor's Exhibition Series*

## *Fall 2007*



Opening reception from 4:00 p.m. to 6:00 p.m.  
on Monday, August 27, in the East Building.  
Free and open to the public.

For more information contact: 509-372-7185  
2710 University Drive, Richland, WA, 99354 USA  
[www.tricity.wsu.edu/artgallery](http://www.tricity.wsu.edu/artgallery)

WASHINGTON STATE  
 UNIVERSITY  
TRI-CITIES

