

# FACTS and FIGURES

2007-2008

## System-Wide Student Profile

(fall 2007)

Total enrollment	24,396*
Undergraduates	20,282
Graduate students	3,330
Professional students	784
Average age of undergraduate students	23
Average age of graduate students	32
Enrollment: 48% men, 52% women	
Enrollment: 83% in-state students, 12% out-of-state students, 5% international students	
Multicultural students (excluding international students): 14%	

\*Total reflects actual students, not concurrent enrollment.

## Rankings and Recognition

- 57th among public institutions for research and development expenditures (National Science Foundation, 2006)
- 37th among public universities for faculty awards (The Center for Measuring University Performance, 2006)
- 39th among public universities for National Academy Members (The Center for Measuring University Performance, 2006)
- *US News and World Report* ranked WSU 58th among public national universities and 118th overall (Fall 2007)
- Many individual departments rank among the top 10 in the country

## Colleges of Washington State University

College of Agricultural, Human, and Natural Resource Sciences  
College of Business  
College of Education  
College of Engineering and Architecture  
College of Liberal Arts  
College of Nursing  
College of Pharmacy  
College of Sciences  
College of Veterinary Medicine

WSU also has the University Honors College, Graduate School, Center for Distance and Professional Education, and WSU Extension.

WSU offers more than 200 fields of study, many of which have won national and international awards. For a complete listing, see [futurestudents.wsu.edu/academics/fos](http://futurestudents.wsu.edu/academics/fos).

Get more facts online at [www.wsu.edu/AboutWSU.html](http://www.wsu.edu/AboutWSU.html).

Office of University Relations  
PO Box 641040 • Pullman, WA 99164-1040  
509-335-7628 • [www.wsu.edu](http://www.wsu.edu)



Throughout the state and around the world, Washington State University is driving innovation and transforming lives.

WASHINGTON STATE  
UNIVERSITY



*World Class. Face to Face.*

Discover • Teach • Serve

# Washington State University

As the state's only land-grant research institution, Washington State University is the people's university.

With campuses in Pullman, Vancouver, Tri-Cities, and Spokane, research stations in key agricultural areas from Mount Vernon to Prosser, and extension offices in every county in the state, WSU is working every day to provide the education, knowledge, and discoveries that improve lives here and around the world.



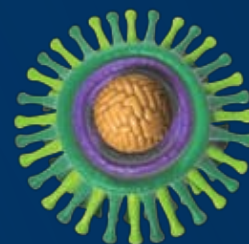
## FIRST IN NATION

Building on three decades of pioneering research in sustainable agriculture, in 2006 WSU became the first university in the country to offer a major in organic agriculture systems.  
[afs.wsu.edu/organic.htm](http://afs.wsu.edu/organic.htm)



## CLIMATE CHANGE

WSU researchers have been studying the air we breathe for 50 years. In 2007 the Environmental Protection Agency funded WSU's Laboratory for Atmospheric Research as part of an \$8 million collaborative effort—along with universities such as Stanford, Harvard, and Carnegie Mellon—to better understand and combat global warming.  
[www.wsu.edu/spotlight/nasa](http://www.wsu.edu/spotlight/nasa)



## PROTECTING HEALTH

WSU is home to the Washington Animal Disease Diagnostic Laboratory and is a founding member of the National Animal Health Laboratory Network, a key component in protecting U.S. citizens against animal diseases including avian flu virus (pictured above) and West Nile virus.  
[www.wsu.edu/spotlight/virus](http://www.wsu.edu/spotlight/virus)



*“Welcome to Washington State University, an institution of uncompromising excellence in its delivery of undergraduate, graduate, and professional education. Washington State University faculty and staff, along with our many community partners, are working every day to educate young people with the knowledge, skills, and global understanding to improve lives and transform the world.”*

—President Elson S. Floyd, Ph.D.

Elson S. Floyd took office as the 10th president of Washington State University on May 21, 2007. Before coming to WSU, Dr. Floyd served as president of the four-campus University of Missouri system and of Western Michigan University in Kalamazoo. From 1993 to 1995, Dr. Floyd was executive director of the Washington State Higher Education Coordinating Board.

## Campus Profiles

Washington State University was founded in Pullman in 1890, and Pullman remains the system's largest campus and home to the central administration. In 1989, additional campuses were created in Spokane, the Tri-Cities, and Vancouver to offer upper division, graduate, and professional programs to students in growing but underserved regions of the state. WSU Vancouver began admitting freshmen in fall 2006 and WSU Tri-Cities' first freshman class was in fall 2007.

## WSU Enrollment

### Pullman (fall 2007) total 17,583

Undergraduate students	15,003
Graduate students	1,983
Professional students	597

Average age of undergraduate students	21
Average age of graduate students	29

Enrollment: 53% men, 47% women

Enrollment: 81% in-state students, 13% out-of-state students, 6% international students

Multicultural students (excluding international students): 15%

### Spokane (fall 2007) total 1,198

Undergraduate students	641
Graduate students	371
Professional students	186

Average age of undergraduate students	25
Average age of graduate students	36

Enrollment: 25% men, 75% women

Enrollment: 78% in-state students, 19% out-of-state students, 3% international students

Multicultural students (excluding international students): 14%

### Tri-Cities (fall 2007) total 1,240

Undergraduate students	924
Graduate students	316

Average age of undergraduate students	27
Average age of graduate students	35

Enrollment: 38% men, 62% women

Enrollment: 95% in-state students, 4% out-of-state students, 1% international students

Multicultural students (excluding international students): 13%

### Vancouver (fall 2007) total 2,546

Undergraduate students	2,008
Graduate students	538

Average age of undergraduate students	26
Average age of graduate students	37

Enrollment: 40% men, 60% women

Enrollment: 90% in-state students, 9% out-of-state students, 1% international students

Multicultural students (excluding international students): 11%

## Distance Degree Programs

### (fall 2007) total 2,530

Undergraduate students	2,339
Graduate students	189
Professional students	2

Average age of undergraduate students 34

Average age of graduate students 36

Enrollment: 33% men, 67% women

Enrollment: 89% in-state students, 10% out-of-state students, <1% international students

Multicultural students (excluding international students): 14%

## WSU Extension

There are WSU Extension offices in each of Washington's 39 counties, providing research-based educational programs and services to individuals, businesses, and communities. WSU has established key agricultural research stations in Lind, Mount Vernon, Othello, Prosser, Puyallup, and Wenatchee.



### Foreign Study

WSU offers more than 100 study abroad programs in 70 countries around the world. In addition, WSU faculty create and lead a changing variety of international study tours.

### Libraries

The WSU Libraries have more than 2.3 million book volumes and access to 26 million more through a consortium of 33 libraries in Washington and Oregon. WSU digital collections encompass an expanding array of electronic resources.



### Intercollegiate Sports

Pac-10 conference; 17 NCAA teams

### WSU Mascot

Butch the Cougar



### WSU Fight Song

*Fight, Fight, Fight for Washington State*



### WSU Alma Mater

*Washington, My Washington*

### WSU Alumni

161,337 (living, spring 2007)



### Choice University

The 2007 freshman class is not only the largest in WSU history, but also has the highest SAT scores of any incoming class and more students of color than ever before.

## Employees (fall 2006)

	Faculty	AP*	Classified	Total
Pullman	1,619	1,150	1,583	4,352
Spokane	209	75	95	379
Tri-Cities	67	43	65	175
Vancouver	146	46	94	286
Other	260	224	204	688
<b>Total</b>	<b>2,301</b>	<b>1,538</b>	<b>2,041</b>	<b>5,880</b>

\*AP refers to administrative professional employees

## Research and Development Expenditures (2006)

\$203.5 million

(National Science Foundation, 2006)

## Private Support (2007 est.)

\$79.8 million



## WSU Endowment (2007)

\$650.9 million, including \$317.1 million WSU Foundation and \$333.8 million Land Grant

## Operating Budget

### Revenues: Operating budget

2007–2009 biennium \$1.7 billion

(\$508.6 million of this is state general fund, not including tuition and fees)

**Payroll FY 2007** (gross salaries and wages) \$367.7 million

## Financial aid and scholarships FY 2006

\$190 million to 16,537 students



## Community and Civic Engagement

During the 2006–07 academic year, WSU students volunteered more than 29,095 hours through the Center for Civic Engagement.

## Campus Acreage

Pullman	620 acres at core, 1,875 total acres
Spokane	48 acres
Tri-Cities	202 acres
Vancouver	351 acres

## WSU Regents

**Kenneth Alhadeff**, Seattle

**Scott Carson**, Federal Way

**Harold Cochran**, Walla Walla

**Elizabeth Cowles**, Spokane

**Francois X. Forgette**, Kennewick

**William J. Gordon** (student regent), Ellensburg

**Laura Jennings**, Seattle

**Connie Niva**, Everett

**V. Rafael Stone**, Seattle

**Michael C. Worthy**, Vancouver

Regents serve staggered terms.

Go to [regents.wsu.edu](http://regents.wsu.edu) for current listing.

## University Leadership

**Elson S. Floyd**

*President*

**Robert C. Bates**

*Provost and Executive Vice President*

**Karl Boehmke**

*Executive Director of Planning and Budgeting*

**John Fraire**

*Vice President for Enrollment Management*

**John C. Gardner**

*Vice President for Economic Development and WSU Extension*

**Viji Murali**

*Vice President for Information Services and Chief Information Officer*

**Tim Pavish**

*Interim Vice President for University Relations*

**Greg Royer**

*Vice President for Business and Finance*

**James Sterk**

*Director of Intercollegiate Athletics*

**Michael J. Tate**

*Vice President for Student Affairs, Equity and Diversity*

**Brenda Wilson-Hale**

*Senior Vice President, WSU Foundation*

## Deans

**Warwick M. Bayly**

*Dean, College of Veterinary Medicine*

**Daniel J. Bernardo**

*Dean, College of Agricultural, Human, and Natural Resource Sciences*

**Patricia Butterfield**

*Dean, College of Nursing*

**Candis Claiborn**

*Dean, College of Engineering and Architecture*

**Linda Kirk Fox**

*Dean and Director, WSU Extension*

**Howard Grimes**

*Dean, Graduate School*

**Michael Griswold**

*Dean, College of Sciences*

**James P. Kehrer**

*Dean, College of Pharmacy*

**Erich Lear**

*Dean, College of Liberal Arts*

**Judy N. Mitchell**

*Dean, College of Education*

**Muriel Oaks**

*Dean, Center for Distance and Professional Education*

**Eric Spangenberg**

*Dean, College of Business*

**Jay Starratt**

*Dean of Libraries*

**Elizabeth A. (Libby) Walker**

*Interim Dean, Honors College*

## Chancellors

**Vicky Carwein**

*Chancellor, WSU Tri-Cities*

**Harold A. Dengerink**

*Chancellor, WSU Vancouver*

**Brian Pitcher**

*Chancellor, WSU Spokane*