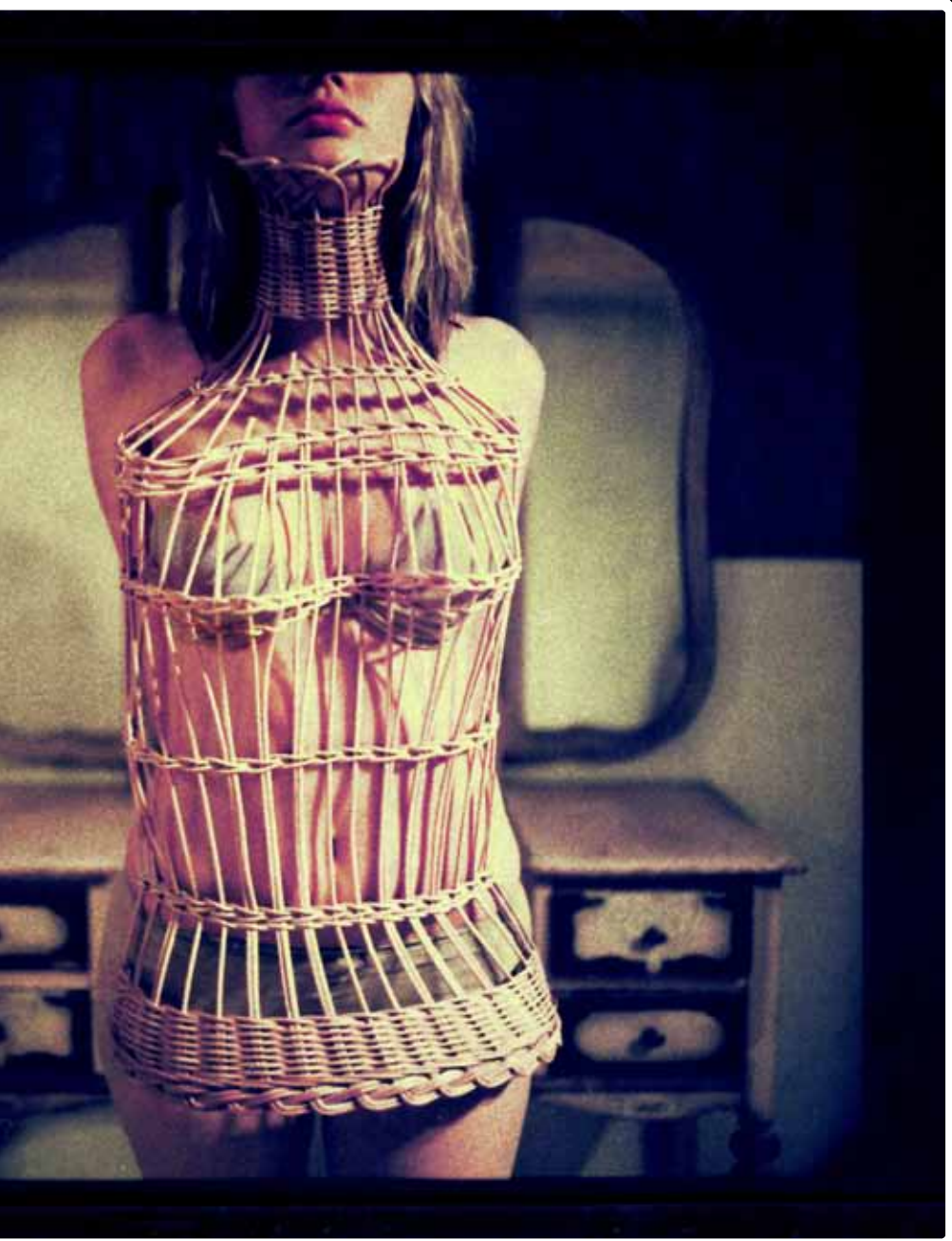


skeleton in the closet: Disordered Lives

Fritz Liedtke



November 5 - 30

Monday, November 16
12:00 p.m.

Phyllis Morris

College of Nursing academic director

opens the exhibit
with a discussion on the
delicate subject of
eating disorders.

Art is on display through
November 30

The Art Center
In the Consolidated Information Center
2770 University Drive
Richland

Regular Hours of Operation
12 to 6 p.m.

Monday through Thursday

Closed for holidays on Nov. 11 & Nov. 26

A SPONSOR OF THE
LIBERAL ARTS SEASON

ART
Richland
Arts Commission

**THE
ART
CENTER**

CELEBRATING
20 YEARS
1989-2009
WSU TRI-CITIES

*Part of the Fall 2009
Liberal Arts Season of Events
Free and open to the public.
Refreshments will be served.*